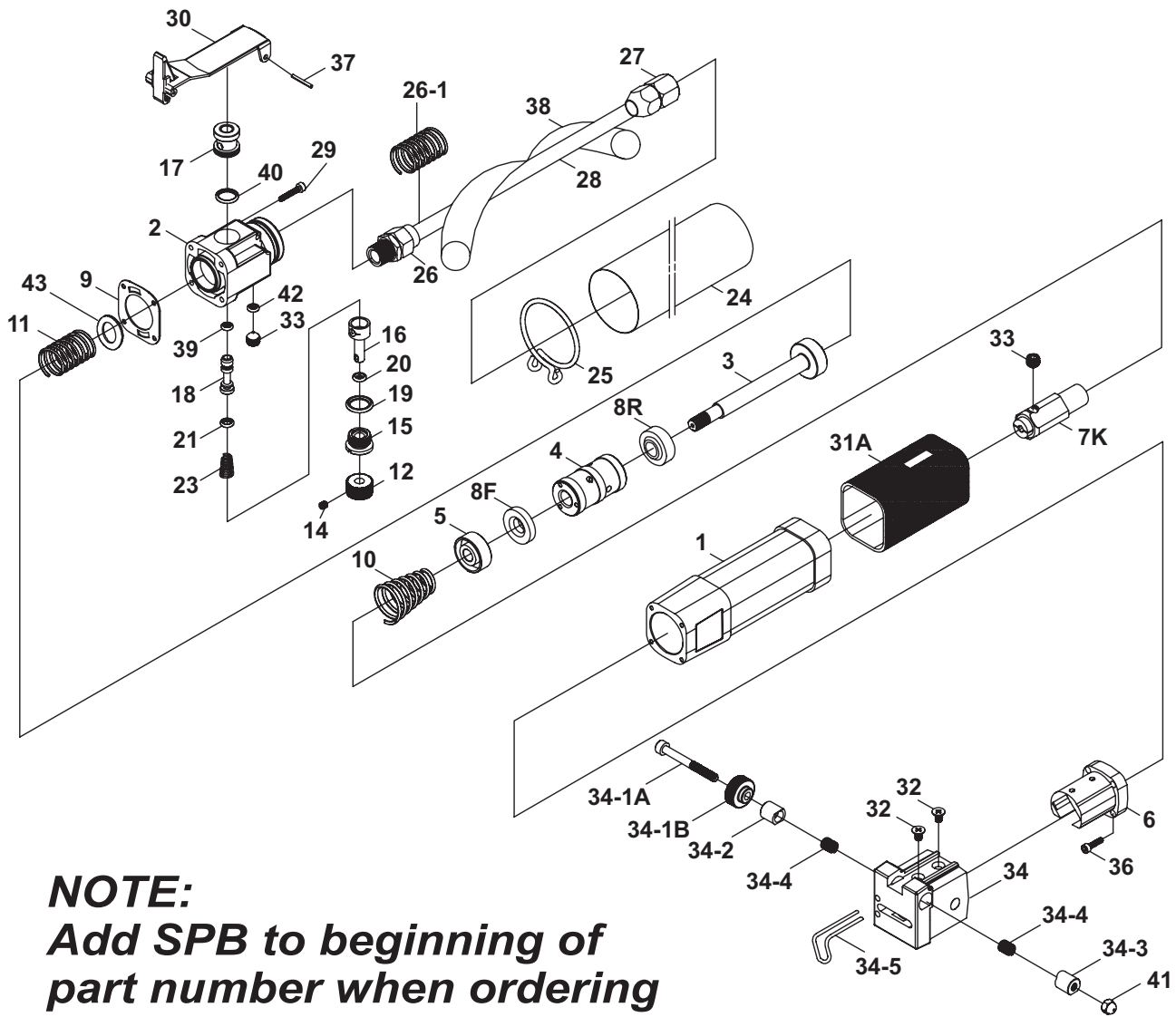


BTB WKHD10 RECIPROCATING AIR POWER TOOL



NOTE:
Add SPB to beginning of part number when ordering

Part #	Description	Qty.
1K	Main Body (Incl 1, 31A)	1
2	Regulator Valve Body	1
3	Piston Rod	1
4	Piston	1
5	Collar	1
6	Guide Head	1
7K	Chuck	1
8F	Urethane Spacer, Front	1
8R	Urethane Spacer, Rear	1
9	Gasket	1
10	Front Spring	1
11	Rear Spring	1
12	Valve Knob (Includes 14 Set Screw)	1
14	Set Screw	1
15	Regulator Cap (Includes 19)	1
16	Regulator (Includes 20)	1
17	Valve Bush (Includes 40)	1
18	Valve (Includes 21, 39)	1
19	O-Ring	1
20	O-Ring	1
21	O-Ring	1
23	Spring	1
24	Muffler Sleeve	1
25	Muffler Sleeve Clip	1
26	Hose Nipple Front	1
26-1	Hose Spring	1
27	Hose Coupling Assembly Rear	1

Part #	Description	Qty.
28	Air Hose (Excl. Couplings)	1
28BK	Air Hose Assembly (Incl 24, 25, 26, 26-1, 27, 28, 38)	1
29	Screw Rear	4
30	Lever	1
31A	Body Cover (Green to suit E-Series+)	1
32	Cap Screw	2
33	Cone Set Screw (For Chuck & Oil Hole)	2
33F	Flat Set Screw (for Air Saw Blades)	1
34	Controller Cap	1
34-1A	Clamp Screw	1
34-1B	Knob	1
34-2	Plain Jaw	1
34-3	Threaded Jaw	1
34-4	Spring	2
34-5	Air Saw Guide	1
34K	Controller Cap Assembly (Incl 34, 34-1A, 34-1B, 34-2, 34-3, 34-4 x 2, 32 x 2, 41)	
34JK	Controller Cap Jaw Set (Incl 34-1A, 34-1B, 34-2, 34-3, 34-4 x 2, 41)	
36	Front Screw	4
37	Lever Pivot Pin	1
38	Foam Muffler	1
39	O-Ring	1
40	O-Ring	1
41	Lock Nut	1
42	O-Ring	1
43	Washer	1